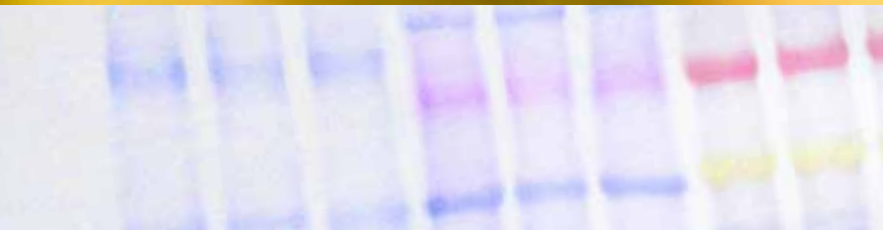


Everygel for Electrophoresis



Precast Acrylamide Gels

Isoelectric Focusing

SDS PAGE

Native PAGE

2D Gel Electrophoresis

Protein Standards

SERVA Serving Scientists

SERVA Electrophoresis GmbH has been a well-known supplier of life sciences research reagents for almost 70 years. Our mission is to make innovative products available to our customers, meeting their day-to-day needs. Technical competence and total quality management are our basis for continuous improvement and service.

At SERVA, our policy is to pursue the highest standards in product quality, workplace safety and responsibility for the environment we live in. We dedicate expertise and integrity to guarantee consistent product performance and continuity of supply. SERVA is ISO 9001:2015 certified.



For all SERVA products a complete range of documentation like Material Safety Data Sheets or Certificates of Analysis is provided. For the use of all SERVA products manuals, Technical Notes, Application Notes and the best technical support is at your disposal.



Trust in SERVA as a competent partner with many years of experience in development of solutions for protein electrophoresis.

Everygel for Electrophoresis

Decades of experience in the supply of quality reagents at SERVA Electrophoresis GmbH provide expertise in manufacture, development and distribution of electrophoresis products. The knowhow is the platform for outstanding customer service – **all you need** to succeed. This brochure will give you the complete overview of all our precast electrophoresis gels, complemented by special reagents used in electrophoresis. SERVA covers the pathway of electrophoretical technologies from sample preparation to image analysis.

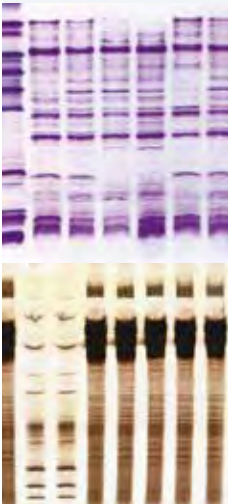
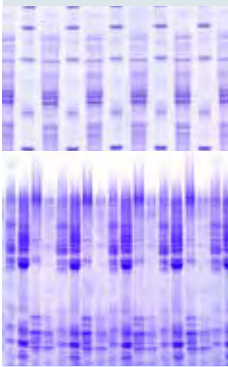

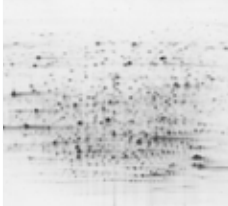
Electrophoresis belongs to the most widely used separation technologies for biomolecules. It is the true workhorse in thousands of labs. The core of all separations are the gels.

SERVA offers the widest range of precast gels. Proteins can get separated by different physico-chemical parameters like :

- Charge: Isoelectric Focusing or IEF
- Molecular weight under denaturing condition: SDS PAGE
- Molecular weight under native condition: Native PAGE
- 2-Dimensional: i.e. by performing consecutively two of the above mentioned methods

SERVA produces gels for more than 40 years – hard to find a place with more experience in manufacturing, developing and supporting the use of electrophoresis gels!

Precast Gels from SERVA: Wide Variety – Outstanding

Separation by	Gel type	Format
	SERVALYT™ PRECOTES™	125 x 125 x 0.15 mm or 0.3 mm, 245 x 125 x 0.15 or 0.3 mm
	SERVALYT™ PreNets™	125 x 125 x 0.3 mm
	Blank PRECOTES™	125 x 125 x 0.3 mm
	FocusGel	250 x 115 x 0.65 mm
	Blank FocusGel	250 x 115 x 0.65 mm
	IEF Gel for PhastSystem™	50 x 42 x 0.43 mm
	CleanGel for PhastSystem™	50 x 42 x 0.43 mm
	SERVAGel™ IEF	10 x 10 x 0.7 cm (cassette)
	SERVAGel™ TG PRiME™	10 x 10 x 0.7 cm (cassette)
	SERVAGel™ Neutral pH 7.4	10 x 10 x 0.7 cm (cassette)
	SERVAGel™ Neutral HSE	10 x 10 x 0.7 cm (cassette)
	SDS Gel Kit	250 x 125 x 0.45 mm
	Excellent Gel Kit	260 x 125 x 0.43 mm
	SDS Gel 8-25 % for PhastSystem™	50 x 42 x 0.43 mm
	SERVAGel™ N Native	10 x 10 x 0.7 cm (cassette)
	SERVA IPG <i>BlueStrip</i>	7 / 11 / 17 / 18 / 24 mm length x 0.3 mm
	2D HPE™ Large Gel	255 x 200 x 0.65 mm
	2D HPE™ Double Gel	250 x 110 x 0.65 mm
	2D HPE™ Triple Gel	250 x 110 x 0.65 mm
	SERVAGel™ TG PRiME™	10 x 10 x 0.7 cm (cassette)
	SERVAGel™ Neutral pH 7.4	10 x 10 x 0.7 cm (cassette)
	SERVAGel™ Neutral HSE	10 x 10 x 0.7 cm (cassette)

* SERVALYT™ PRECOTES™ and FocusGel for CSF are suitable for determination of oligoclonal bands in cerebrospinal fluid (CSF).

** All SERVA precast gels are compatible with most commercially available electrophoresis units (horizontal, vertical), for compatibility

Binding Performance

	Sample wells	pH range or acrylamide concentration	Orientation**	Page
0.3 mm	none	3-10 / 3-6 / 4-6 / 6-9 / CSF*	Horizontal	6
	none	3-10	Horizontal	7
	none	n.a.	Horizontal	9
	24, 40, none	3-10 / 3-7 / 4-5 / 4-6 / 6-9 / 6-11 (CSF*)	Horizontal	6
	24	n.a.	Horizontal	9
	none	3-9; CSF*	Horizontal	6
	none	n.a.	Horizontal	6
	10, 12 or 15	4-7 / 3-10	Vertical	10
	10, 12 or 15	8 % / 10 % / 12 % / 14 % / 4-12 % / 4-20 % / 8-16 %	Vertical	14
	10, 12 or 15	n.a.	Vertical	14
	10, 12 or 15	n.a.	Vertical	14
	25 or 53	10 % / 15 %	Horizontal	15
	25	7.5 % / 12.5 % / 15 %	Horizontal	15
	none	n.a.	Horizontal	15
	10, 12 or 15	3-12 % / 4-16 %	Vertical	16
	none	3-10 / 3-10 NL / 4-7 / 5-8	Horizontal	20
	1 for 1 strip (24 cm)	12.5 % / 10-15 %	Horizontal	19
	2 for 2 strips (11 cm)	12.5 % / 10-15 %	Horizontal	19
	3 for 3 strips (7 cm)	12.5 % / 10-15 %	Horizontal	19
	2D well (7 cm)	12 % / 14 % / 8-16 %	Vertical	21
	2D well (7 cm)	n.a.	Vertical	21
	2D well (7 cm)	n.a.	Vertical	21

ty please ask (tech.service@serva.de).

Isoelectric Focusing (IEF)

Isoelectric Focusing (IEF) can be described as an ingenious process for simultaneous concentration and separation of proteins. IEF is, in principle, an end point method – when the electrophoretic run is completed, proteins will appear as separate, sharp zones in the order of their isoelectric points. IEF employs a pH gradient to separate proteins according to their different pI values (pI = isoelectric point).

SERVALYT™ PRECOTES™

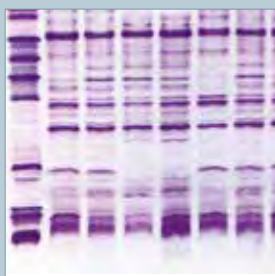
- | Gel formats of 125 mm x 125 mm and 125 mm x 245 mm, gel layer 0.15 mm or 0.3 mm
- | Available as kits containing everything that is needed to perform IEF
- | Special application: CSF
- | Bound to GEL-FIX™ supporting film
- | Shelf-life 18 months (12 months for pH 6–9)
- | Supplied as package of 5 gels

FocusGels

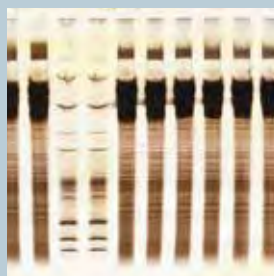
- | Gel format of 115 mm x 250 mm, gel layer 0.65 mm
- | Gels do not require buffer strips, samples can be applied into sample slots
- | Available as kits containing everything that is needed to perform IEF
- | Dedicated kit for CSF
- | Bound to GEL-FIX™ supporting film
- | Shelf-life 12 months (6 months for pH 6–11)
- | Supplied as package of 5 gels

IEF Gels for PhastSystem™

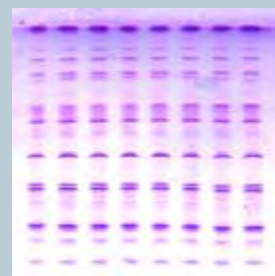
- | One pre-selected pH range 3–9, ready-to-use
- | Gel format of 50 mm x 42 mm, gel layer 0.43 mm
- | For special applications (CleanGel IEF, CSF Analysis Kit)



IEF of proteins from different kinds of potato cultivars



FocusGel 3-10



SERVA IEF Gel 3-9 für PhastSystem™

- | Highly convenient handling
- | Ready-to-use
- | Long shelf life
- | Easy to process and store

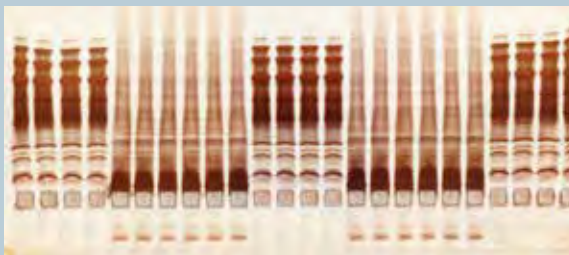
Gel Selection Guide: SERVALYT™ PRECOTES™ versus FocusGel

SERVALYT™ PRECOTES™ – high resolution, small volumes, fast separation

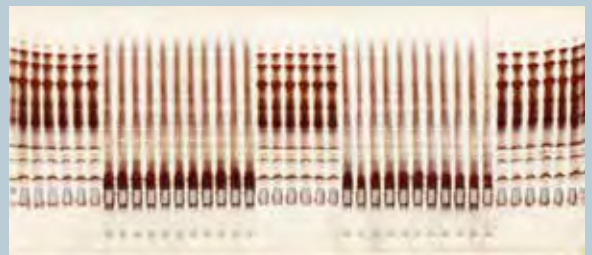
Gels having a very thin gel layer of 0.15 mm or 0.3 mm feature short separation times and staining/visualization processes. Due to the thin layer, gels need only small sample volumes to be applied. The samples are applied to the gel using application strips (silicon strip with slots placed easily onto the gel surface). Electrode wicks soaked with special buffers are positioned underneath the electrodes. SERVALYT™ PRECOTES™ gels are recommended for a great range of QC tests in food and beverage control, species identification and tasks requiring highly sensitive detection of bands. Gels are also available as SERVALYT™ PreNets™ which come with a cast-in supporting fabric, ideally suited for blotting applications.

FocusGel – high buffering capacity, sample loading into slots

FocusGels are offered with a gel layer of 0.65 mm which makes them less sensitive to "salt effects" than the SERVALYT™ PRECOTES™. Due to the high buffering capacity the FocusGel is the gel of choice for all separations of salt carrying samples like serum and cerebrospinal fluid, cell and tissue extracts. One of the most important application is the separation of oligoclonal bands in MS diagnostics. FocusGels contain a SERVALYT™ cocktail designed to achieve an optimal pH gradient. Due to thickness of the layer, electrode solutions and electrode strips are not required and the electrodes are placed directly on the gel surface. FocusGels are available with 24 slots, 40 slots or none.



FocusGel 6-11 24S



FocusGel 6-11 40S

SERVALYT™ PRECOTES™ are 0.15 mm or 0.3 mm thin, they offer higher sensitivity and faster separation and processing time, though they are more sensitive to salt content in the sample.

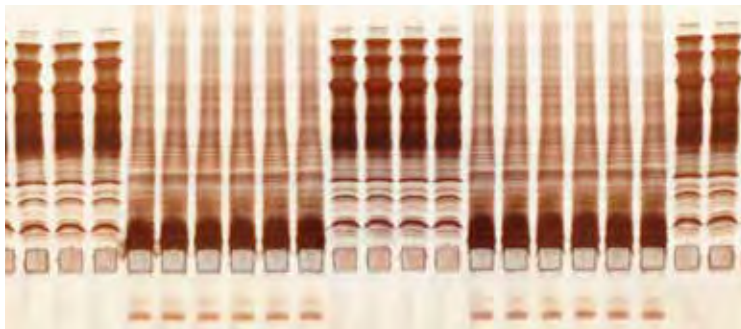
FocusGels are 0.6 mm thick, washed and rehydrated with SERVALYT™ mixture. The gels have the highest buffer capacity of all, the separation and visualization time is longer than for the thinner gels.

CSF IEF Kits for Determination of Oligoclonal Bands

Isoelectric Focusing is the method of choice for the determination of oligoclonal bands in cerebrospinal fluid and a key method for the diagnosis of inflammatory processes in the central nervous system.

SERVA offers three kits for this application:

- FocusGel 6-11 – package of 5 gels, available with 24 slots or 40 slots
- SERVALYT™ PRECOTES™ CSF Kit - contains 5 gels (pH gradient 3-10) and electrode solutions
- CSF Analysis Kit for PhastSystem™ – package of 10 gels, compatible with PhastSystem™

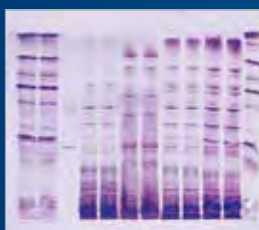


FocusGel 6-11 24S

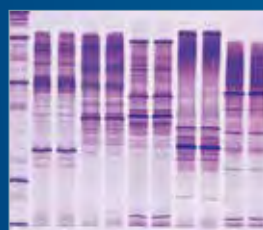
SERVA CSF Silver Staining Kit – optimized visualisation of oligoclonal bands in IEF gels.

The SERVA CSF Silver Staining Kit allows protein detection in polyacrylamide gels with high sensitivity. It is particularly optimized for detection of oligoclonal IgG bands in cerebrospinal fluid (CSF) after sample separation using FocusGel 6-11.

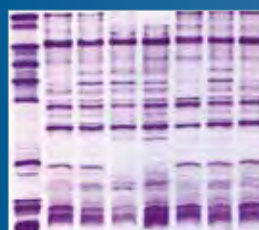
SERVA offers more optimized separations for highly specialized applications, e.g. food and beverage quality control (species identification like bovine, pork; food control like fish, cheese or meat; agricultural applications like wheat and maize)



IEF of proteins isolated from different kinds of cheese



IEF of proteins isolated from different kinds of meat



IEF of proteins isolated from different kinds of potato

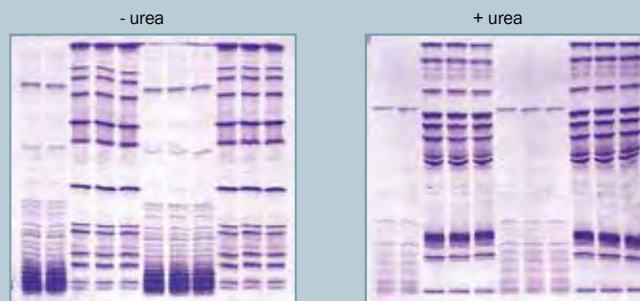


IEF of proteins isolated from different kinds of wheat

Blank PRECOTES™ and Blank FocusGels

Blank gels provide a superb solution to obtain gels of any pH range to perform Isoelectric Focusing (IEF) by use of flatbed electrophoresis. Blank gels do not contain any carrier ampholytes. Therefore, they are given the prefix "blank" to indicate that they are (almost) "empty" gels with a matrix that can be adapted to any pH gradient the user needs. Blank PRECOTES™ and Blank FocusGels are equilibrated in the ampholyte mixture of choice for 30 minutes prior to electrophoresis.

- Versatile use in IEF due to ampholyte-free gel matrix
- Equilibrate in any ampholyte of your choice and in urea if needed
- Critical polymerization at very basic or acidic pH values is not an issue



Blank PRECOTES™ equilibrated with SERVALYT™ pH 3-10

- Blank PRECOTES™ flatbed precast gels for IEF
 - | Bound to GEL-FIX™ supporting film for easy handling
 - | Format 125 mm x 125 mm, gel layer 0.3 mm
- Blank FocusGels flatbed precast gels for IEF
 - | Bound to GEL-FIX™ supporting film for easy handling
 - | Format 250 mm x 115 mm, gel layer 0.65 mm

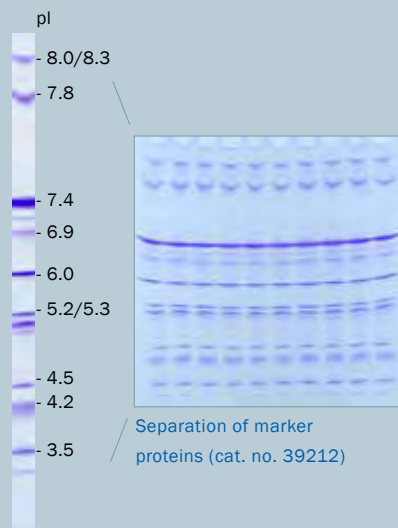
- Top separation at any pH range of user's choice
- Can be used for both, native and denaturing IEF
- Can be cut into any desired size

SERVAGe™ IEF vertical precast gels for IEF

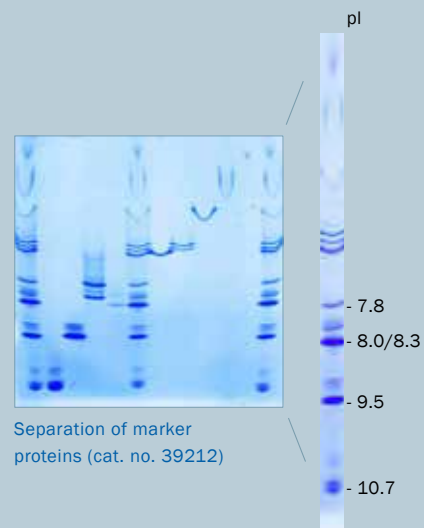
The SERVAGe™ IEF are available for the pH gradients 3-10 and 4-7 with 10,12 or 15 sample wells. Poured in stable plastic cassettes (10 cm x 10 cm), these gels will perfectly fit into the BlueVertical™ PRiME™ vertical electrophoresis tank (BV-104). They can be operated under native or denaturing conditions. The concentration of the acrylamide matrix is 5 % T, 3 % C, SERVALYT™ content is approx. 3 %.

- For vertical IEF in mini slab gel format
- In unbreakable plastic cassette (10 cm x 10 cm)
- Available in pH range 3–10, 4–7
- Cathodic sample application (Standard IEF)
- Anodic sample application (NEPHGE, non-equilibrium pH gradient electrophoresis)
- Starter kit available

Vertical standard IEF using SERVAGe™ IEF 3–10



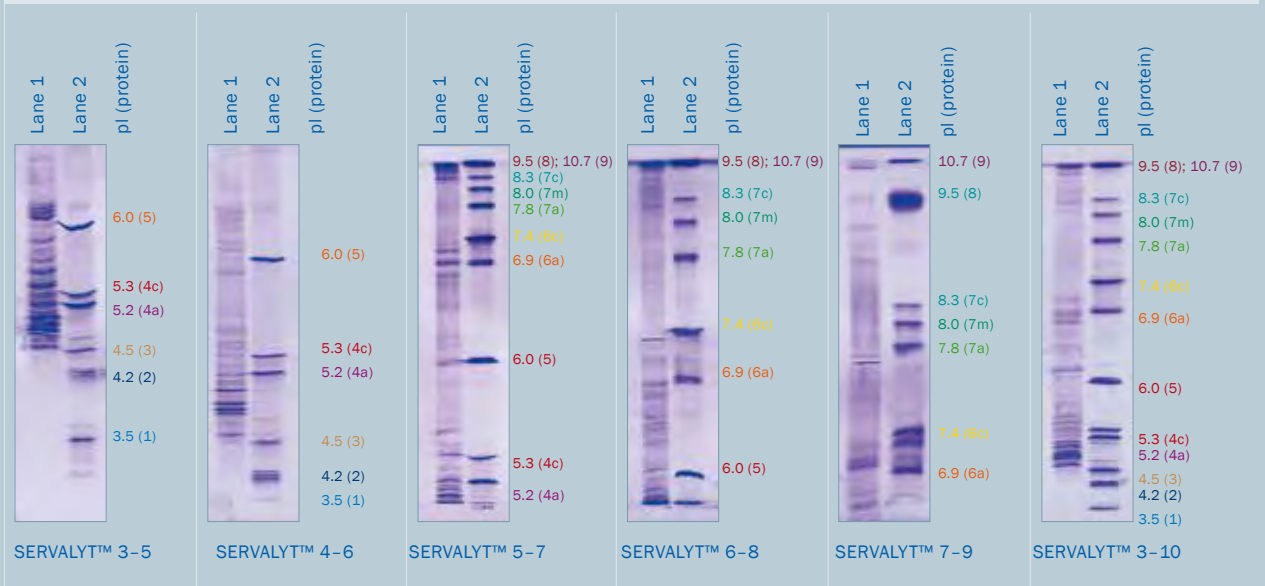
NEPHGE using SERVAGe™ IEF 3–10



- Achieve high-resolution separation of your proteins by standard IEF
- Separate basic to very basic proteins (> pH 7.5) by NEPHGE
- Could be run in standard vertical mini slab gel apparatus – no special equipment needed

SERVALYT™ Carrier Ampholytes

- Multimeric composition of small amphoteric molecules with high buffering capacity
- High solubility in trichloroacetic acid (fast removal of ampholytes during fixation)
- Virtually no interaction with metal ions



Lane 1 Wheat corn extract

Lane 2 IEF Markers 3-10 SERVA Liquid Mix (Cat. No. 39212)

- | | | |
|--------------|--------------------|----------------------|
| 1 | Amyloglucosidase | pI 3.5 |
| 2 | Glucose oxidase | pI 4.2 |
| 3 | Trypsin inhibitor | pI 4.5 |
| 4a/4c | β-Lactoglobulin | pI 5.2/pI 5.3 |
| 5 | Carbonic anhydrase | pI 6.0 |
| 6a / 6c | Myoglobin | pI 6.9/pI 7.4 |
| 7a / 7m / 7c | Lectin | pI 7.8/pI 8.0/pI 8.3 |
| 8 | Ribonuclease A | pI 9.5 |
| 9 | Cytochrome C | pI 10.7 |



- High resolution
- Clear background associated with very low unspecific binding of dyes and stains
- Fast staining and destaining times

Reagents and accessories for isoelectric focusing

Electrode solutions

- | Buffers for horizontal IEF (sample buffer, anode and cathode solution)
- | Buffers for vertical IEF (sample buffer, anode and cathode solution)
- | Optimized for high resolution IEF

IEF sample buffer

- | 2x concentrated
- | Contains 4 % SERVALYT 4-9T, 30 % glycerol, 0.005 % phenol red
- | Suited to horizontal and vertical IEF applications

Sample application strips

- | Available in different lengths and slot formats/shapes
- | Made from silicone rubber, 0.5 mm thickness
- | Also available: applicator pieces (10 mm x 5 mm)
- | Easy application of protein samples in flatbed IEF

Heat exchange liquids

- | Use either Kerosene or cooling contact fluid
- | Efficient heat exchange between ultrathin IEF gel and cooling plate

Electrode wicks

- | Available in three different lengths
- | Made from filter cardboard

Reagents for self-casting of IEF gels

- | Acrylamide/Bis solution (29:1; 30 or 40 % w/v)
- | Ammonium persulfate (APS)
- | N,N,N',N'-Tetramethyl-ethylenediamine (TEMED)
- | BlueSlick™ for non-toxic treatment of glass plates

GEL-FIX™ supporting film

- | Activated at both sides to covalently bind acrylamide or to bind agarose
- | Available in sheet form or as a roll
- | No torsion of the gel, no tearing of the gel to pieces

NetFix™ binding fabric

- | Supporting fabric to stabilize acrylamide gel layers
- | Direct suitable for blotting applications

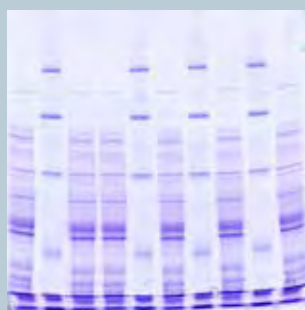
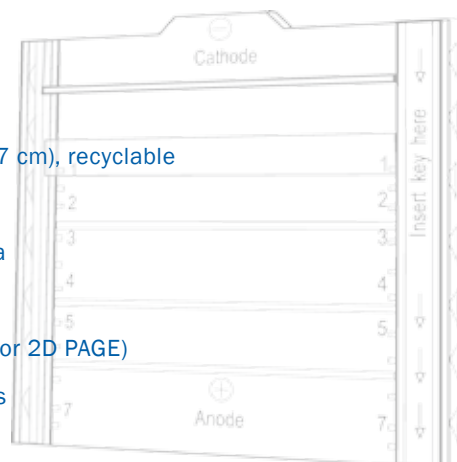
| All accessories and reagents are tested and qualified for electrophoresis

Vertical SDS PAGE

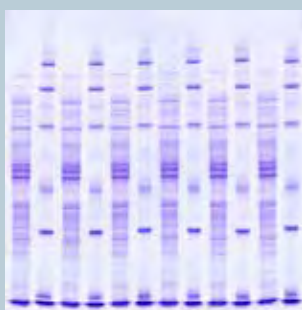
Separation of proteins by SDS PAGE is like sieving proteins according to their size. The sieve is the polyacrylamide matrix where the acrylamide/Bis-concentration determines the pore size of the sieve. The driving force through the sieve is the electric field that moves the completely by SDS covered and denatured proteins to the anode. This results in separation of smaller from larger proteins. The buffer system in use, supplying different ions/ionic strengths, is also influencing the separation pattern. A variety of buffer systems is available to optimize protein separation. Often SDS PAGE is performed in vertical slab gel tanks.

SERVAGE™ Precast Gels for SDS PAGE

- | Premium resolution, superb band sharpness
- | Unbreakable plastic cassette (10 cm x 10 cm x 0.7 cm), recyclable
- | Separation distance is 7 cm
- | The separation range is from 3 kDa up to 200 kDa
- | Available with 10, 12 or 15 sample wells
- | Available with 1 well (for preparative applications or 2D PAGE)
- | Fit into most commercially available slab gel tanks
- | Starter kits for all gel types are available



SERVAGE™: 10 sample wells



SERVAGE™: 12 sample wells



SERVAGE™: 1 2D sample well

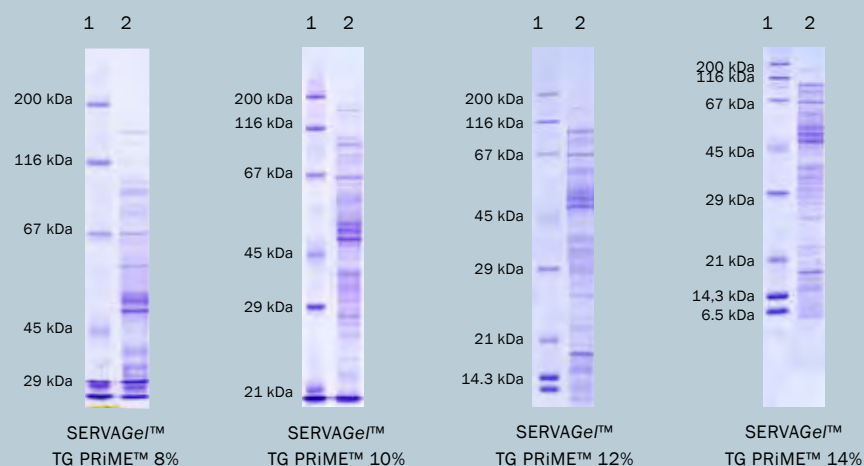
- | Different gel types for high resolution
- | Reproducible results from gel to gel
- | Shelf life up to 2 years depending on gel type
- | Short set-up times, gels are ready-to-use
- | Easy and safe to operate
- | Health risk reduced to minimum (polymerized acrylamide, non-toxic)

SERVAGE™ Precast Gels for Vertical SDS PAGE

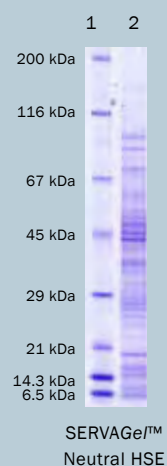
- | SERVAGE™ TG PRiME™ gels for standard and fast electrophoresis (35 min) according to Laemmli with long shelf life
- | SERVAGE™ Neutral HSE gel for high speed electrophoresis (20 min) with long shelf life
- | SERVAGE™ N Neutral gel pH 7.4 with long shelf life suitable for different running buffer systems, e.g. Tris/Glycine or Tris/Tricine
- | SERVAGE™ 2D for 2D PAGE (one very even 2D slot)



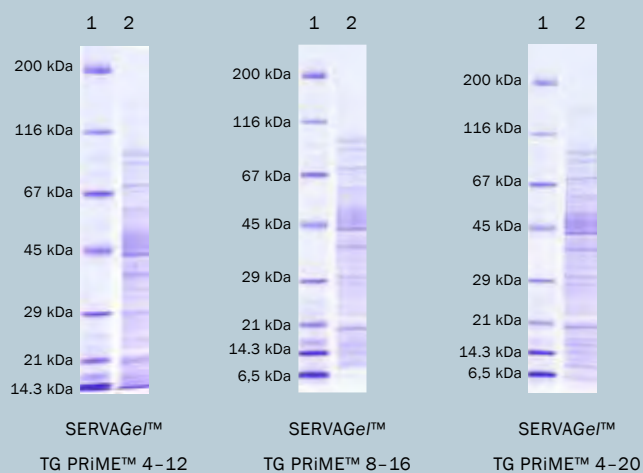
SERVAGE™ TG PRiME™ Homogeneous Gels



SERVAGE™ Neutral HSE



SERVAGE™ TG PRiME™ Gradient Gels



SERVAGE™ Neutral Gels



1 SDS PAGE Protein Marker

2 *E. coli* extract

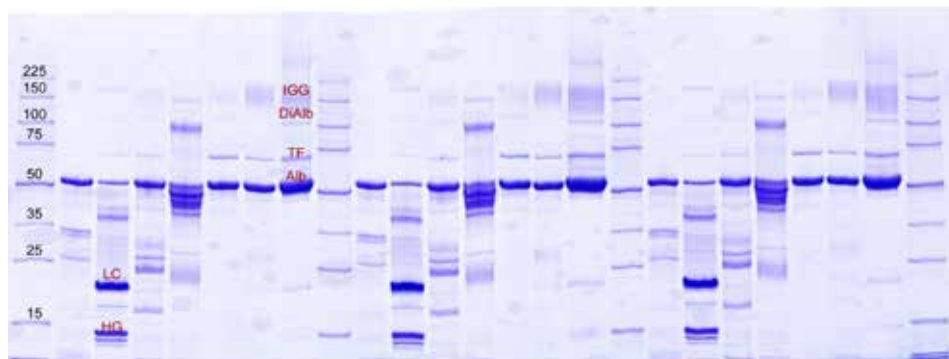
Horizontal SDS PAGE

SDS PAGE carried out in horizontal orientation using flatbed electrophoresis chambers is a valuable alternative to mostly common vertical PAGE. The use of precast flatbed gels, as supplied with the SDS Gel Kits, results in lower buffer consumption, easy handling of the gels, most efficient temperature control and superb resolution. The SERVA SDS PAGE Kit comes with four ready-to-use, film-backed gels and one buffer kit, containing anode and cathode buffer and fibre wicks.

The gels within the SDS Gel Kits contain a neutral buffer system. The Excellent Gel Kits contain SDS TA gels with a tris/acetate buffer system showing comparable band patterns like Excel™ gels from GE Healthcare.

Samples are applied easily into precast slots. Gels can be run in any horizontal electrophoresis system. Kits for special applications like analysis of urine proteins are available. Film-backing can be easily removed for Western Blotting. Both gel types have a shelf life of 24 months

- | SERVA SDS gels are offered as gel format of 250 mm x 125 mm, gel layer 0.45 mm
- | SERVA Excellent gels are offered as gel format of 260 mm x 125 mm, gel layer 0.43 mm
- | Sample application: 25 slots (15 µl sample) or 52 slots (6 µl sample)
- | Acrylamide concentrations of 10 % or 15 % and 7.5 % or 12.5 %.
- | Available as complete kit with 4 gels per package and buffers
- | SDS Urine Gel Kit optimized for analysis of urine proteins by SDS PAGE
- | SERVA SDS Gel 8-25 % Kit (10 gels and buffers) – compatible with GE PhastSystem™



Urinary proteins separated on SDS Gel 10 % 25 S

- | High resolution 1D SDS PAGE
- | Excellent Gels show comparable band patterns as Excel™ gels from GE Healthcare
- | Ready-to-use kits, application orientated
- | Low buffer consumption
- | Easy handling, long shelf life

Native PAGE

If SDS is omitted from the gel system proteins are separated according to their native state, i. e. by their intrinsic charge and size. The separation of proteins by native PAGE is highly influenced by the pH value of the buffer system and, of course, the porousness of the gel matrix.

Blue Native PAGE (BN PAGE) is a special application which makes use of Coomassie™ Brilliant Blue G-250 to bind to the outer surface of protein complexes leading to a negatively charged protein-dye-complex. The Blue G dye does not act as a detergent thus maintaining the native structure of the protein throughout the electrophoresis process.

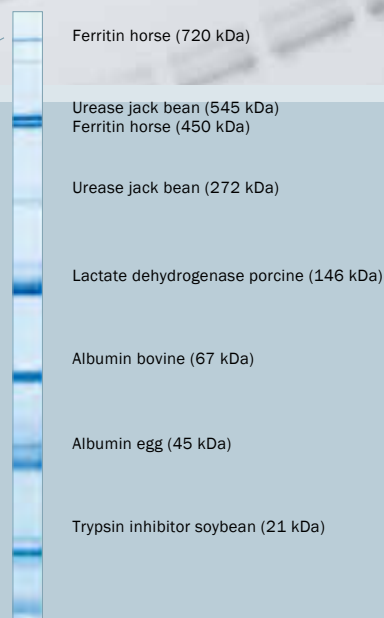
SERVAGE™ Precast Gels for Native PAGE

SERVAGE™ N for Blue Native (BN) and Clear Native (CN) PAGE

- | Premium resolution, superb band sharpness
- | Unbreakable plastic cassette (10 cm x 10 cm x 0.7 cm), recyclable
- | Separation distance is 7 cm
- | Available as 3–12 % and 4–16 % gradient gels
- | Available with 10, 12 or 15 wells
- | Starter kits are available



SERVA Native Marker Liquid Mix for BN/CN PAGE (cat. no. 39219) separated by clear native PAGE on SERVAGE™N 4–16 % (cat. no. 43252)



- | One gel type for both, Clear and Blue Native PAGE
- | Detailed, optimized protocols are available
- | Buffers ready-to-use for native PAGE

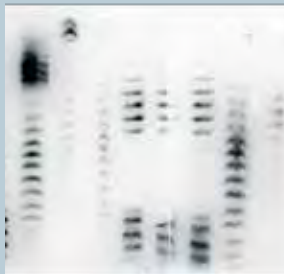


CleanGels

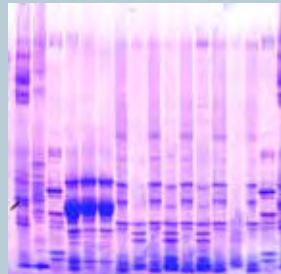
Versatile Flatbed IEF Gels for Special Applications

CleanGels are film-backed acrylamide gels for horizontal electrophoresis which are washed and dried after casting. They feature long shelf life of up to 24 months and can be restored with any buffer to accomplish separations of nucleic acids and proteins. They can be rehydrated with any buffer of your choice according to your application.

- | Standard gel format 250 x 115 mm, gel layer 0.43 mm with 30 sample slots
- | For EPO typing supplied in kit with 4 gels and buffers
- | Small gel format for PhastSystem™ (IEF) 50 x 42 mm, gel layer 0.43 mm
- | Standard gels – choice of 25 slots (15 µl of sample) or 52 slots (6 µl of sample)
- | Gels are film-backed for easy handling
- | Supplied as 4 gels (standard format) or 20 gels (small format) per package



IEF according to WADA procedures



Different rice und maize varieties

- | EPO IEF Kit for EPO typing in the presence of urea
- | PhastSystem™ compatible CleanGel IEF for native and denaturing IEF with the carrier ampholyte mixture of choice

2D Gel Electrophoresis

There are different ways and methods to perform 2D gel electrophoresis. The standard protocol is to separate proteins according to their pI using gel strips with an immobilized pH gradient embedded in a polyacrylamide gel matrix (IPG strips) in the 1st dimension and to separate these proteins thereafter according to their molecular weights by SDS PAGE in the 2nd dimension.

High Performance Electrophoresis: HPE™ BlueHorizon™

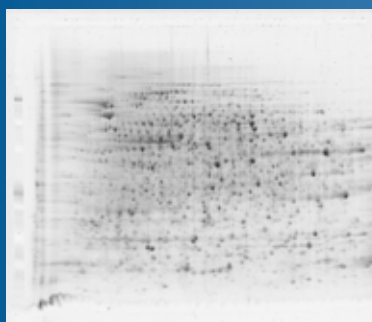
The SERVA HPE™ BlueHorizon™ is a flatbed electrophoresis system providing second to none resolution, reproducibility and sensitivity – the first true "High Performance Electrophoresis" system. Up to 4 units can be stacked on top of each other under the control of one power supply unit and one chiller. In this meadow up to four polyacrylamide gels can be operated simultaneously to conduct either 1- and 2-dimensional separations. Appropriate gels were developed especially for use with the HPE™ equipment – a fine-tuned technology which features superb resolution and allows the researcher to achieve outstanding results. HPE™ outperforms any conventional 2D PAGE system.

HPE™ System at a Glance

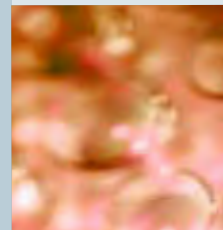
- 4 horizontal electrophoresis platforms embedded in a drawers
- Alumina ceramics cooling plate for high efficient heat dissipation
- Electrode positions mounted in lids, adjustable to different gel sizes
- High throughput , versatile applications, 1D (IEF, SDS PAGE, native PAGE), 2D (IEF/SDS PAGE)
- Additional system components: cooling unit, power supply with monitoring software to log the electrical parameters during gel electrophoresis



2D HPE™ Large Gel 12.5 %, silver stained

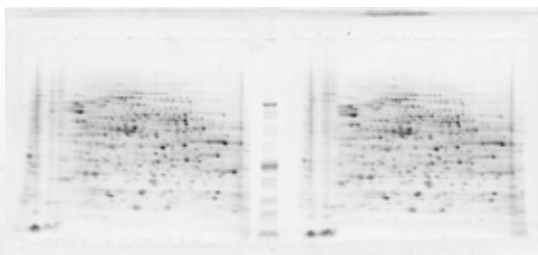


2D HPE™ Large Gel NF 12.5 %, stained with SERVA Purple

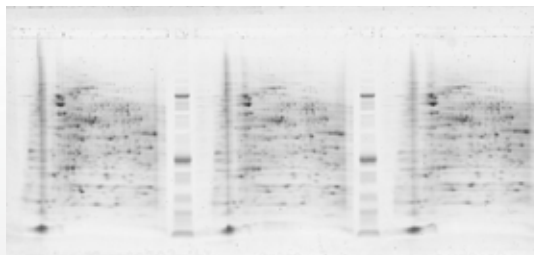


HPE™ Gels at a Glance

- Industrial production precision of the gels guarantees highly reliable gels and reproducible results
- Specially designed gel buffer system allows shelf life of 24 months
- Detection of wide molecular weight range, from 300,000 kDa down to 6500 Da
- Buffers and gels are ready-to-use
- Non-fluorescent backing film for all fluorescent labelling and staining procedures
- For subsequent electro-transfer e.g. in HCP analysis, available as HPE™ 2D BlotGel as triple, double and large gel, with easily removable non-fluorescent carrier foil
- High efficient sample transfer from 1st to 2nd dimension due to application of the IPG strips into a precast trench of the gel



2D HPE™ Double Gel NF 12.5 %, stained with SERVA Purple



2D HPE™ Triple Gel NF 12.5 %, stained with SERVA Purple

HPE™ Gels are available in three different formats:

- Large Format Gel (gel size 255 mm x 200 mm), accommodating one 24 cm IPG strip
- Double Gel (gel size 250 mm x 110 mm), accommodating two 11 cm IPG strips
- Triple Gel (gel size 250 mm x 110 mm), accommodating three 7 cm IPG strips

Kits are supplied with four plastic-backed gels including running and equilibration buffers, wicks and cooling contact fluid. Gels are cast on NF (non-fluorescent)-backing film providing best results in fluorescent staining and labelling techniques. They are also suitable to silver staining and Coomassie™ staining but for best results use gels on standard backing.

- 2D Gel electrophoresis carried out in the HPE™ system – easy, reliable, top separations
- 2D HPE™ BlotGels with easily detachable carrier foil for 2D Western blotting, e.g. in HCP 2D WB analysis

Gel Strips with Immobilized pH Gradients

SERVA IPG *BlueStrips* are dried gel strips with immobilized pH gradient used in high resolution 2D gel electrophoresis of proteins. The strips are rehydrated before use. The homogeneous polyacrylamide gel matrix is covalently bound to GEL-FIX™ to stabilize the gel. Each gel strip has its individual number printed on and, therefore, is suitable for documentation according GMP/GLP.

SERVA IPG *BlueStrips*

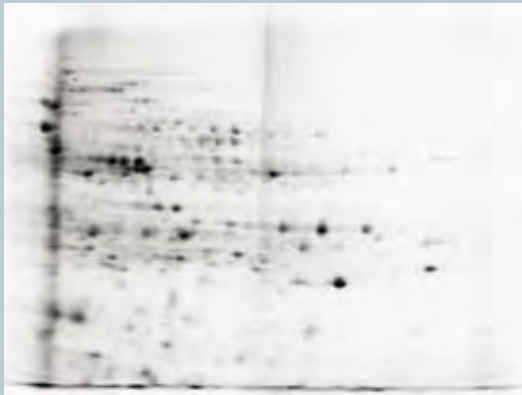
- | Dried polyacrylamide/Bis gel strips with immobilized pH gradient
- | Strip lengths are 7, 11, 17, 18 or 24 cm
- | pH gradients are 4-7, 5-8, 3-10 or 3-10NL
- | Each gel strip can be tracked (individual number)
- | Corresponding SERVALYT™ carrier ampholytes for rehydration procedure available in convenient 2 ml pack size



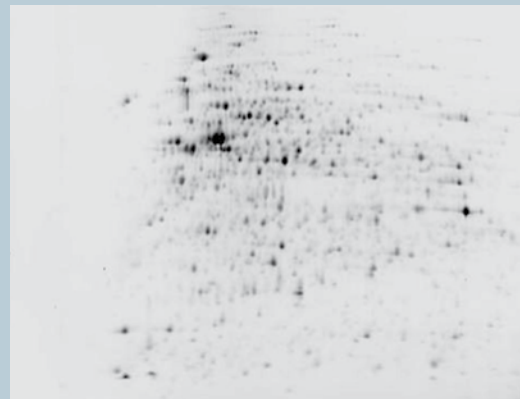
- | Premium resolution at consistent performance
- | Lot-to-lot reproducibility
- | Customized pH gradients and gel strip lengths are available upon request
- | Suitable for documentation according to GMP/GLP
- | Various strip lengths fitting all standard apparatus

SERVAGe™ 2D Precast Gels for Mini Vertical Systems

- | SERVAGe™ TG PRIME™ gels for standard and fast electrophoresis (35 min) according to Laemmli featuring long shelf life
- | SERVAGe™ Neutral HSE gel for high speed electrophoresis (20 min), long shelf life
- | One very planar 2D slot, for optimum protein transfer from strip to gel
- | For more general information on SERVAGe™ precast gels please refer to chapter 2 in this brochure



2D electrophoresis on SERVAGe™ TG PRIME™ 14 % vertical mini gel stained with SERVA HPE™ Lightning Red



2D electrophoresis on a SERVA 2D HPE Large Gel 12.5 % flat-bed gel stained with SERVA HPE™ Lightning Red

With kind permission by Knut Büttner, Institute for Microbiology, University of Greifswald, Germany.

SERVA HPE™ Lightning Red

SERVA HPE™ Lightning Red is a fluorescent dye for rapid labeling of proteins prior to 2D PAGE, making any staining and washing steps after electrophoresis unnecessary. After labeling at 0 °C for 15 minutes proteins are applied to IPG strips by rehydration or cup loading. Patterns of two-dimensional electrophoresis separations of labeled and non-labeled protein mixtures do not show any detectable differences. In addition the dye is fully compatible with mass spectrometry and other downstream methods like Western Blotting.

- | Direct detection, no staining and washing steps after the run
- | Very high sensitivity, < 100 pg protein / spot
- | Wide dynamic and linear range of > 10⁴
- | No over-staining effects
- | Fully MS and WB compatible

Protein Standards

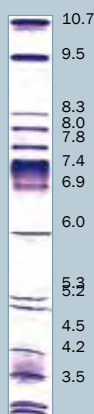
SERVA offers a variety of different protein standards for isoelectric focusing (IEF), SDS and native PAGE as well as for 2D gel electrophoresis. Choose the best suited from over 15 different protein standards for your application.

SERVA Protein Standards for Isoelectric Focusing (IEF)

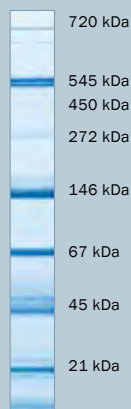
- | Ready-to-use or lyophilized protein markers
- | Applicable to all IEF gels (vertical, horizontal)
- | Purified protein components, salt-free
- | 13 isoforms featuring characteristic patterns (pI 3.5–10.7)

SERVA Protein Standards for Native PAGE

- | SERVA Native Marker Liquid Mix for BN/CN PAGE
 - Ready-to-use
 - Contains 6 different proteins
 - Ranging under native conditions from 21 to 720 kDa
- | Protein Molecular Weight Standards
 - Set of 8 single proteins, lyophilized, 25 mg each
 - Ranging from 12.4 to 450 kDa



Separation of SERVA IEF Marker 3–10 Liquid Mix (cat. no. 39212) on SERVALYT™ PRECOTES™ 3–10 (cat. no. 42867)



SERVA Native Marker Liquid Mix for BN/CN PAGE (cat. no. 39219) separated by Clear Native PAGE on SERVAGE™ N 4–16 % (cat. no. 43252)

| Determine the pI of your unknown protein samples

| Determine the molecular weight of your unknown sample under native conditions

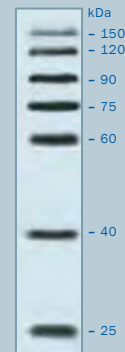
SERVA VisiBlot Standard I

- Ready-to-use
- Consists of 10 recombinant proteins (20 to 150 kDa)
- Contains antibody binding site
- Pre-stained proteins at 25, 45 and 85 kDa
- Even signal intensity

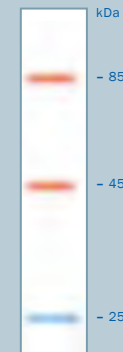
SERVA Protein Standards for SDS PAGE

- Ready-to-use or lyophilized protein markers
- Unstained or covalently stained protein markers

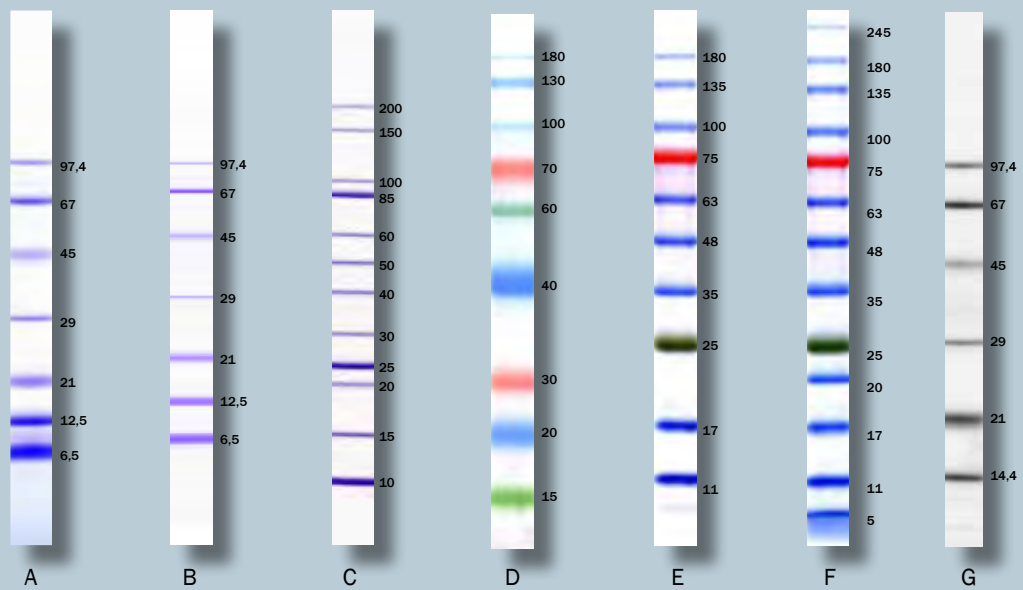
Marker band with antibody binding sites



Pre-stained marker bands



SERVA VisiBlot Standard (cat. no. 39260)



Protein Test Mixture 6 for SDS PAGE (A)
SERVA Unstained SDS PAGE Protein Marker 6.5 - 97 kDa, liquid mix (B)
SERVA Unstained Protein Standard IV (C)
SERVA Triple Color Protein Standard I (D)
SERVA Triple Color Protein Standard II (E)
SERVA Triple Color Protein Standard III (F)
SERVA Fluo-610 Standard I (G)

Determine the molecular weight of your unknown protein samples

Monitor the separation performance and blotting efficiency

Monitor the antibody binding efficiency in your Western Blot experiment

Product and Ordering Information

ISOELECTRIC FOCUSING

SERVALYT™ PRECOTES™ Flatbed Precast Gels for IEF

Description	Size	Cat. No.
SERVALYT™ PRECOTES™ pH 3–10, size 125 mm x 125 mm x 0.3 mm	5 gels	42866.02
SERVALYT™ PRECOTES™ pH 3–10, size 245 mm x 125 mm x 0.3 mm	5 gels	42867.02
SERVALYT™ PRECOTES™ pH 3–6, size 125 mm x 125 mm x 0.3 mm	5 gels	42874.02
SERVALYT™ PRECOTES™ pH 4–6, size 125 mm x 125 mm x 0.3 mm	5 gels	42875.02
SERVALYT™ PRECOTES™ pH 6–9, size 125 mm x 125 mm x 0.3 mm	5 gels	42878.02
SERVALYT™ PRECOTES™ pH 3–6, size 245 mm x 125 mm x 0.15 mm	5 gels	42919.03
SERVALYT™ PRECOTES™ pH 3–10, size 125 mm x 125 mm x 0.15 mm	5 gels	42965.03
SERVALYT™ PRECOTES™ pH 3–10, size 245 mm x 125 mm x 0.15 mm	5 gels	42967.02
SERVALYT™ PRECOTES™ pH 3–6, size 125 mm x 125 mm x 0.15 mm	5 gels	42974.02
SERVALYT™ PRECOTES™ pH 6–9, size 125 mm x 125 mm x 0.15 mm	5 gels	42978.02
IEF Starter Kit	1 kit	39060.01
SERVALYT™ PRECOTES™ CSF Kit, size 245 x 125 mm x 0.3 mm	1 kit	42800.01

FocusGels

Description	Size	Cat. No.
FocusGel 3–10, size 250 mm x 115 mm x 0.65 mm	5 gels	43327.01
FocusGel 3–10 24S, size 250 mm x 115 mm x 0.65 mm	5 gels	43335.01
FocusGel 6–11 24S, size 250 mm x 115 mm x 0.65 mm	5 gels	43329.01
FocusGel 6–11 40S, size 250 mm x 115 mm x 0.65 mm	5 gels	43333.01
FocusGel 3–7, size 250 mm x 115 mm x 0.65 mm	5 gels	43328.01
FocusGel 3–7 24S, size 250 mm x 115 mm x 0.65 mm	5 gels	43387.01
FocusGel 4–5 24S, size 250 mm x 115 mm x 0.65 mm	5 gels	43332.01
FocusGel 4–6 24S, size 250 mm x 115 mm x 0.65 mm	5 gels	43334.01
FocusGel 6–9 24S HEM, size 250 mm x 115 mm x 0.65 mm	5 gels	43330.01
CSF Analysis Kit for PhastSystem™, 10 gels, size 50 mm x 42 mm x 0.43 mm	1 kit	43393.01
IgG Sample Diluter IEF	100 ml	43336.01

SERVALYT™ PreNets™ FLATBED PRECAST GELS FOR IEF

Description	Size	Cat. No.
SERVALYT™ PreNets™ pH 3–10, size 125 mm x 125 mm x 0.3 mm	5 gels	42738.02

Blank PRECOTES™ FLATBED PRECAST GELS FOR IEF

Description	Size	Cat. No.
Blank PRECOTES™, size 125 mm x 125 mm x 0.3 mm	5 gels	42759.01

SERVAGe™ Vertical Precast Gels for IEF

Description	Size	Cat. No.
SERVAGe™ IEF 3-10, 15 sample wells	10 gels	43239.01
SERVAGe™ IEF 3-10, 12 sample wells	10 gels	43240.01
SERVAGe™ IEF 3-10, 10 sample wells	10 gels	43242.01
SERVAGe™ IEF 4-7, 10 sample wells	10 gels	43243.01
SERVAGe™ IEF 4-7, 12 sample wells	10 gels	43241.01
SERVAGe™ IEF 4-7, 15 sample wells	10 gels	43244.01
SERVAGe™ IEF Starter Kit	1 kit	43205.01

SERVALYT™ Carrier Ampholytes

Description	Size	Cat. No.
SERVALYT™ 2-11	10 ml	42900.01
SERVALYT™ 2-11	25 ml	42900.02
SERVALYT™ 2-4	10 ml	42902.01
SERVALYT™ 2-4	25 ml	42902.02
SERVALYT™ 3-5	10 ml	42903.01
SERVALYT™ 3-5	25 ml	42903.02
SERVALYT™ 3-5	2 ml	42903.04
SERVALYT™ 4-6	10 ml	42904.01
SERVALYT™ 4-6	25 ml	42904.02
SERVALYT™ 4-6	2 ml	42904.04
SERVALYT™ 5-7	10 ml	42905.01
SERVALYT™ 5-7	25 ml	42905.02
SERVALYT™ 5-7	2 ml	42905.04
SERVALYT™ 6-8	10 ml	42906.01
SERVALYT™ 6-8	25 ml	42906.02
SERVALYT™ 6-8	2 ml	42906.04
SERVALYT™ 7-9	10 ml	42907.01
SERVALYT™ 7-9	25 ml	42907.02
SERVALYT™ 7-9	2 ml	42907.04
SERVALYT™ 9-11	10 ml	42909.01
SERVALYT™ 9-11	25 ml	42909.02
SERVALYT™ 4-9 T	10 ml	42910.01
SERVALYT™ 4-9 T	25 ml	42910.02
SERVALYT™ 4-9 T	100 ml	42910.03
SERVALYT™ 6-9	10 ml	42913.01
SERVALYT™ 6-9	25 ml	42913.02
SERVALYT™ 6-9	2 ml	42913.04
SERVALYT™ 3-4	10 ml	42922.01
SERVALYT™ 3-4	25 ml	42922.02
SERVALYT™ 4-5	10 ml	42923.01
SERVALYT™ 4-5	25 ml	42923.02
SERVALYT™ 5-6	10 ml	42924.01
SERVALYT™ 5-6	25 ml	42924.02
SERVALYT™ 6-7	10 ml	42925.01
SERVALYT™ 6-7	25 ml	42925.02
SERVALYT™ 2-9 Seed-Mix	10 ml	42935.01

Description	Size	Cat. No.
SERVALYT™ 2-9 Seed-Mix	25 ml	42935.02
SERVALYT™ 2-9 Seed-Mix	100 ml	42935.03
SERVALYT™ 3-10	10 ml	42940.01
SERVALYT™ 3-10	25 ml	42940.02
SERVALYT™ 3-10	2 ml	42940.04
SERVALYT™ 3-6	10 ml	42944.01
SERVALYT™ 3-6	25 ml	42944.02
SERVALYT™ 3-6	2 ml	42944.04
SERVALYT™ 3-7	10 ml	42945.01
SERVALYT™ 3-7	25 ml	42945.02
SERVALYT™ 4-7	10 ml	42948.01
SERVALYT™ 4-7	25 ml	42948.02
SERVALYT™ 4-7	2 ml	42948.04
SERVALYT™ 4.2-4.9	10 ml	42948.04
SERVALYT™ 4.2-4.9	25 ml	42926.01
SERVALYT™ 5-8	10 ml	42926.02
SERVALYT™ 5-8	25 ml	42949.02
SERVALYT™ 5-8	2 ml	42949.04
SERVALYT™ 5-9	10 ml	42950.01
SERVALYT™ 5-9	25 ml	42950.02
SERVALYT™ 8-10	10 ml	42911.01
SERVALYT™ 8-10	25 ml	42911.02
SERVALYT™ 3-10 Iso-Dalt for 2D PAGE	10 ml	42951.01
SERVALYT™ 3-10 Iso-Dalt for 2D PAGE	25 ml	42951.02
SERVALYT™ 3-10 Iso-Dalt for 2D PAGE	2 ml	42951.04

Accessories for IEF: Buffers (flatbed, vertical)

Description	Size	Cat. No.
IEF Sample Buffer (2x) sterile filtered	20 ml	42537.01
SERVAGel™ Vertical IEF Running Buffer kit	1 kit	42539.01
Anode Fluid 3 for IEF	50 ml	42984.03
Cathode Fluid 10 for IEF	50 ml	42986.03

Accessories for IEF: Sample Application Strips

Description	Size	Cat. No.
Applicator strips 2 x 3.5, 19 slots, 100 mm long	6 pieces	42914.01
Applicator strips 3.5 x 2, 15 slots, 100 mm long	6 pieces	42915.01
Applicator strips 3.5 x 2, 43 slots, 240 mm long	3 pieces	42899.01
Applicator strips 7 x 1, 24 slots, 260 mm long	3 pieces	42989.01
Applicator Strips Kit	1 kit	42937.02

Accessories for IEF: Heat Exchange Liquids

Description	Size	Cat. No.
Kerosene, low odor	1 L	26945.01
Cooling contact fluid	50 ml	43371.01
Cooling contact fluid	3x 50 ml	43371.02

Accessories for IEF: Electrode Wicks

Description	Size	Cat. No.
Electrode wicks extra size, 300 mm x 6 mm x 1 mm	100 wicks	42972.03
Electrode wicks long size, 240 mm x 6 mm x 1 mm	100 wicks	42987.03
Electrode wicks standard size, 120 mm x 6 mm x 1 mm	100 wicks	42988.01

Accessories for IEF: Reagents for Self-Casting of IEF Gels

Description	Size	Cat. No.
Acrylamide/Bis Solution, 29:1 (40 % w/v), 3.3 % C	500 ml	10680.01
Acrylamide/Bis Solution, 29:1 (40 % w/v), 3.3 % C	4x 500 ml	10680.02
Acrylamide/Bis Solution, 29:1 (40 % w/v), 3.3 % C	1 L	10680.03
Acrylamide/Bis Solution, 29:1 (30 % w/v), 3.3 % C	500 ml	10687.01
Acrylamide/Bis Solution, 29:1 (30 % w/v), 3.3 % C	4x 500 ml	10687.02
Acrylamide/Bis Solution, 29:1 (30 % w/v), 3.3 % C	1 L	10687.03
Ammonium persulfate, electrophoresis grade	50 g	13376.01
Ammonium persulfate, electrophoresis grade	250 g	13376.02
N,N,N',N'-Tetramethyl-ethylenediamine for electrophoresis	10 ml	35930.01
N,N,N',N'-Tetramethyl-ethylenediamine for electrophoresis	25 ml	35930.02
BlueSlick™	250 ml	42500.01

Accessories for IEF: GEL-FIX™ for PAG

Description	Size	Cat. No.
GEL-FIX™ for PAG, 245 mm x 125 mm	36 sheets	42980.01
GEL-FIX™ for PAG, 260 mm x 125 mm	36 sheets	42999.01
GEL-FIX™ for PAG, 260 mm x 203 mm	36 sheets	42961.01
GEL-FIX™ for PAG, 265 mm x 125 mm	36 sheets	42993.01
GEL-FIX™ for PAG, 265 mm x 193 mm	36 sheets	42983.01
GEL-FIX™ for PAG, 50 m x 125 mm	1 roll	42966.01
GEL-FIX™ for PAG, 50 m x 193 mm	1 roll	42968.01
GEL-FIX™ for PAG, 200 m x 193 mm	1 roll	42996.01

Accessories for IEF: GEL-FIX™ for Agarose

Description	Size	Cat. No.
GEL-FIX™ for Agarose, 80 mm x 125 mm	36 sheets	42998.01
GEL-FIX™ for Agarose, 125 mm x 125 mm	36 sheets	42997.01
GEL-FIX™ for Agarose, 258 mm x 125 mm	36 sheets	42982.01
GEL-FIX™ for Agarose, 265 mm x 125 mm	36 sheets	42981.01

Accessories for IEF: GEL-FIX™ for Covers

Description	Size	Cat. No.
GEL-FIX™ Covers, 245 mm x 125 mm	36 sheets	42957.01
GEL-FIX™ Covers, 265 mm x 193 mm	36 sheets	42969.01
GEL-FIX™ Covers, 265 mm x 125 mm	36 sheets	42970.01
GEL-FIX™ Covers, 280 mm x 125 mm	36 sheets	42995.01

Accessories for IEF: NetFix™ for PAG

Description	Size	Cat. No.
NetFix™ for PAG, 265 mm x 125 mm	36 sheets	42775.01

SDS PAGE

SERVAGE™ Vertical Precast Gels for SDS PAGE

Description	Size	Cat. No.
SERVAGE™ TG PRiME™ 8 %, 15 sample wells	10 gels	43284.01
SERVAGE™ TG PRiME™ 8 %, 12 sample wells	10 gels	43260.01
SERVAGE™ TG PRiME™ 8 %, 10 sample wells	10 gels	43261.01
SERVAGE™ TG PRiME™ 10 %, 15 sample wells	10 gels	43285.01
SERVAGE™ TG PRiME™ 10 %, 12 sample wells	10 gels	43263.01
SERVAGE™ TG PRiME™ 10 %, 10 sample wells	10 gels	43264.01
SERVAGE™ TG PRiME™ 12 %, 15 sample wells	10 gels	43286.01
SERVAGE™ TG PRiME™ 12 %, 12 sample wells	10 gels	43266.01
SERVAGE™ TG PRiME™ 12 %, 10 sample wells	10 gels	43267.01
SERVAGE™ TG PRiME™ 12 %, 2D well	10 gels	43268.01
SERVAGE™ TG PRiME™ 14 %, 15 sample wells	10 gels	43287.01
SERVAGE™ TG PRiME™ 14 %, 12 sample wells	10 gels	43269.01
SERVAGE™ TG PRiME™ 14 %, 10 sample wells	10 gels	43270.01
SERVAGE™ TG PRiME™ 14 %, 2D well	10 gels	43271.01
SERVAGE™ TG PRiME™ 4–12 %, 15 sample wells	10 gels	43288.01
SERVAGE™ TG PRiME™ 4–12 %, 12 sample wells	10 gels	43273.01
SERVAGE™ TG PRiME™ 4–12 %, 10 sample wells	10 gels	43274.01
SERVAGE™ TG PRiME™ 4–20 %, 15 sample wells	10 gels	43289.01
SERVAGE™ TG PRiME™ 4–20 %, 12 sample wells	10 gels	43276.01
SERVAGE™ TG PRiME™ 4–20 %, 10 sample wells	10 gels	43277.01
SERVAGE™ TG PRiME™ 8–16 %, 15 sample wells	10 gels	43290.01
SERVAGE™ TG PRiME™ 8–16 %, 12 sample wells	10 gels	43279.01
SERVAGE™ TG PRiME™ 8–16 %, 10 sample wells	10 gels	43280.01
SERVAGE™ TG PRiME™ 8–16 %, 2D well	10 gels	43281.01
SERVAGE™ Neutral pH 7.4, 15 sample wells	10 gels	43256.01
SERVAGE™ Neutral pH 7.4, 12 sample wells	10 gels	43220.01
SERVAGE™ Neutral pH 7.4, 10 sample wells	10 gels	43222.01
SERVAGE™ Neutral HSE, 15 sample wells	10 gels	43249.01
SERVAGE™ Neutral HSE, 12 sample wells	10 gels	43245.01
SERVAGE™ Neutral HSE, 10 sample wells	10 gels	43246.01
SERVAGE™ Neutral HSE, 2D well	10 gels	43247.01
SERVAGE™ TG PRiME™ Starter Kit	1 kit	43206.01

Buffers for SDS PAGE

Description	Size	Cat. No.
Laemmli Buffer 10X, for SDS-PAGE	2 L	42556.01
Laemmli Buffer 10X, for SDS-PAGE	10 L	42556.04
Laemmli Sample Buffer (2x), for SDS PAGE	20 ml	42526.01
Laemmli Sample Buffer (2x), for SDS PAGE	5 x 20 ml	42526.02
SERVA Tris-Glycine/SDS Sample Buffer (2x)	20 ml	42527.01
SERVA Tris-Glycine/SDS Electrophoresis Buffer (10x)	1 L	42529.01
SERVA Tris-Glycine/LDS Sample Buffer (4x)	10 ml	42525.01
SERVA Tris-Tricine/SDS Sample Buffer (2x)	20 ml	42551.01
SERVA Tris-Tricine/SDS Electrophoresis Buffer (10x)	1 L	42552.01
SERVA Tris-Tricine/SDS Electrophoresis Buffer (20x)	10 ml	42525.01
SDS Solution, 20 %, electrophoresis grade	500 ml	20768.02
SDS Solution, 20 %, electrophoresis grade	1 L	20768.03

Horizontal Precast Gels for SDS PAGE

Description	Size	Cat. No.
SDS Gel Kit 10 % 25S, contains 4 gels and buffer kit	1 kit	43359.01
SDS Gel Kit 10 % 52S, contains 4 gels and buffer kit	1 kit	43360.01
SDS Gel Kit 15 % 25S, contains 4 gels and buffer kit	1 kit	43361.01
SDS Gel Kit 15 % 52S, contains 4 gels and buffer kit	1 kit	43362.01
SDS Gel Kit NF 12.5 % 25S, contains 4 gels and buffer kit	1 kit	43363.01
SDS Gel Kit NF 15 % 25S, contains 4 gels and buffer kit	1 kit	43364.01
Excellent Gel Kit 12.5 %, 25S, contains 4 gels and buffer kit	1 kit	43421.01
Excellent Gel Kit 7.5 %, 25S, contains 4 gels and buffer kit	1 kit	43422.01
Excellent Gel Kit NF 12.5 %, 25S, contains 4 gels and buffer kit	1 kit	43423.01
Excellent Gel Kit NF 7.5 %, 25S, contains 4 gels and buffer kit	1 kit	43424.01
Excellent Gel Kit 15 %, 25S, contains 4 gels and buffer kit	1 kit	43425.01
Excellent Gel Kit NF 15 %, 25S, contains 4 gels and buffer kit	1 kit	43426.01
SDS Urine Gel Kit 25S, contains 4 gels and buffer kit	1 kit	43391.01

NATIVE PAGE

SERVAGE™ Vertical Precast Gels for Native PAGE (BN/CN)

Description	Size	Cat. No.
SERVAGE™ N Native Starter Kit	1 kit	43204.01
SERVAGE™ N 3–12, Vertical Native Gel 3–12 %, 10 sample wells	10 gels	43251.01
SERVAGE™ N 3–12, Vertical Native Gel 3–12 %, 12 sample wells	10 gels	43250.01
SERVAGE™ N 3–12, Vertical Native Gel 3–12 %, 15 sample wells	10 gels	43254.01
SERVAGE™ N 4–16, Vertical Native Gel 4–16 %, 10 sample wells	10 gels	43252.01
SERVAGE™ N 4–16, Vertical Native Gel 4–16 %, 12 sample wells	10 gels	43253.01
SERVAGE™ N 4–16, Vertical Native Gel 4–16 %, 15 sample wells	10 gels	43255.01

Buffers for Native PAGE (BN/CN)

Description	Size	Cat. No.
Native Anode Buffer for Blue/Clear Native (10x)	1 L	42535.01
Native Cathode Buffer for Blue/Clear Native (10x)	500 ml	42536.01
Sample Buffer for Blue Native (2x)	20 ml	42533.01
Sample Buffer for Clear Native (2x)	20 ml	42534.01
SERVA Blue G solution for BN, 1 %	20 ml	42538.01

CLEANGELS

CleanGels

Description	Size	Cat. No.
CleanGel IEF for PhastSystem™, 50 mm x 42 mm x 0.43 mm	20 gels	43350.01
EPO Doping IEF Kit 30S, contains 4 gels and buffer kit	1 kit	43389.01

PROTEIN STANDARDS

SERVA Protein Standards for IEF

Description	Size	Cat. No.
Protein Test Mixture for pI-Determination, pH 3–10	10 mg	39211.01
IEF Marker 3–10, Liquid Mix	500 µl	39212.01

SERVA Protein Standards for SDS PAGE

Description	Size	Cat. No.
Protein Test Mixture 6 for SDS PAGE	10 mg	39207.01
Protein Test Mixture 4 for SDS PAGE (29 - 97 kDa)	10 mg	39208.01
Protein Test Mixture 5 for SDS PAGE (6.5 - 29 kDa)	10 mg	39209.01
SERVA Unstained SDS PAGE Protein Marker 6.5 - 97 kDa, liquid mix	500 µl	39214.01
SERVA Unstained Protein Standard IV	500 µl	39250.01
SERVA Triple Color Protein Standard I	500 µl	39251.01
SERVA Triple Color Protein Standard II	500 µl	39257.01
SERVA Triple Color Protein Standard III	500 µl	39258.01
SERVA Fluo-610 Standard I	5 x 50 µl	39261.01

SERVA Protein Standard for Western Blotting

Description	Size	Cat. No.
SERVA VisiBlot Standard I	500 µl	39260.01

SERVA Protein Standards for Native PAGE

Description	Size	Cat. No.
Protein Molecular Weight Standards	1 kit	39064.01
SERVA Native Marker, Liquid Mix for BN/CN	5x 50 µl	39219.01

2D GEL ELECTROPHORESIS

SERVA IPG *BlueStrips* (12 strips each)

pH Range	3–10	3–10 NL	4–7	5–8
Length 7 cm	43001.01	43002.01	43003.01	43006.01
Length 11 cm	43031.01	43032.01	43033.01	43036.01
Length 17 cm	43041.01	43042.01	43043.01	43046.01
Length 18 cm	43011.01	43012.01	43013.01	43016.01
Length 24 cm	43021.01	43022.01	43023.01	43026.01

HPE™ Gels for 2D PAGE

Description	Size	Cat. No.
2D HPE™ Triple-Gel NF 12.5 % Kit, contains 4 gels and buffer kit	1 kit	43300.01
2D HPE™ Triple Gel NF 10–15 % Kit, contains 4 gels and buffer kit	1 kit	43301.01
2D HPE™ Double Gel NF 12.5 % Kit, contains 4 gels and buffer kit	1 kit	43302.01
2D HPE™ Double Gel NF 10–15 % Kit, contains 4 gels and buffer kit	1 kit	43303.01
2D HPE™ Large Gel NF 12.5 % Kit, contains 4 gels and buffer kit	1 kit	43304.01
2D HPE™ Large Gel NF 10–15 % Kit, contains 4 gels and buffer kit	1 kit	43305.01
2D HPE™ Triple Gel 12.5 % Kit, contains 4 gels and buffer kit	1 kit	43306.01
2D HPE™ Triple Gel 10–15 % Kit, contains 4 gels and buffer kit	1 kit	43307.01
2D HPE™ Double Gel 12.5 % Kit, contains 4 gels and buffer kit	1 kit	43308.01
2D HPE™ Double Gel 10–15 % Kit, contains 4 gels and buffer kit	1 kit	43309.01
2D HPE™ Large Gel 12.5 % Kit, contains 4 gels and buffer kit	1 kit	43310.01
2D HPE™ Large Gel 10–15 % Kit, contains 4 gels and buffer kit	1 kit	43311.01
2D HPE™ Triple BlotGel NF 12.5 % Kit	1 kit	43429.01
2D HPE™ Double BlotGel NF 12.5 % Kit	1 kit	43430.01
2D HPE™ Large BlotGel NF 12.5 % Kit	1 kit	43432.01
Buffer Kit for 2D HPE™ Gels	1 kit	43312.01
Cooling Contact Fluid	50 ml	43371.01
Cooling Contact Fluid	3 x 50 ml	43371.02
SERVA HPE IPG Overlay	1 L	43397.01

SERVAGE™ Vertical Precast Gels for 2D PAGE

Description	Size	Cat. No.
SERVAGE™ TG PRiME™ 12 %, 2D well	10 gels	43268.01
SERVAGE™ TG PRiME™ 14 %, 2D well	10 gels	43271.01
SERVAGE™ TG PRiME™ 8–16 %, 2D well	10 gels	43281.01
SERVAGE™ Neutral HSE, 2D well	10 gels	43247.01

Staining Kits

Description	Size	Cat. No.
SERVA HPE™ Lightning Red	1 kit	43400.01
SERVA HPE™ Silver Staining Kit	1 kit	43395.01
SERVA HPE™ Coomassie(R) Staining Kit	1 kit	43396.01
SERVA CSF Silver Staining Kit	1 kit	43398.01

SERVA Protein Standard for 2D PAGE

Description	Size	Cat. No.
SERVA Proteome Markers	1 kit	39220.01



SERVA WORLDWIDE
www.serva.de

SERVA Electrophoresis GmbH
Carl-Benz-Str. 7 · 69115 Heidelberg
Germany · Fon: +49 6221 13840-0
Fax: +49 6221 13840-10
E-mail: info@serva.de · www.serva.de

